

**2019**

Santa Clara County  
Law Enforcement  
Agencies

ANNUAL  
CRIME  
STATISTICS

**Santa Clara County Law Enforcement Agencies**

**Part 1 Crime Totals**

**Annual Report - 2019**

<b>City or Town</b>	<b>Homicide</b>	<b>Rape</b>	<b>Robbery</b>	<b>Assault</b>	<b>Burglary</b>	<b>Theft</b>	<b>Vehicle Theft</b>	<b>Arson</b>	<b>2018 Totals</b>	<b>2019 Totals</b>	<b>Change %</b>
<b>Campbell</b>	0	22	20	296	209	987	158	13	1,754	1,705	-2.8
<b>Cupertino</b>	1	6	14	130	175	803	40	1	1,145	1,170	2.2
<b>Gilroy</b>	4	28	56	444	149	834	306	20	2,188	1,841	-15.9
<b>Los Altos Hills</b>	0	0	0	12	29	38	0	0	70	79	12.9
<b>Los Gatos</b>	0	3	6	3	57	59	339	na	535	467	-12.7
<b>Milpitas</b>	2	18	48	496	203	1,791	203	2	2,407	2,763	14.8
<b>Morgan Hill</b>	2	3	14	182	102	507	94	0	952	904	-5.3
<b>Mountain View</b>	0	16	49	409	321	2,029	112	6	2,609	2,942	12.8
<b>Palo Alto</b>	1	10	46	215	179	1,724	83	8	1,760	2,266	28.8
<b>San Jose</b>	32	671	1339	9,367	4,114	14,924	6,126	135	36,723	36,708	0.0
<b>Santa Clara</b>	1	35	73	638	363	4,013	372	18	4,412	5,513	25.0
<b>Saratoga</b>	0	4	2	47	104	113	14	5	298	289	-3.0
<b>Sunnyvale</b>	0	37	84	482	458	2,598	324	32	3,117*	4,015	28.8
<b>Totals</b>	<b>43</b>	<b>853</b>	<b>1,751</b>	<b>12,721</b>	<b>6,463</b>	<b>30,420</b>	<b>8,171</b>	<b>240</b>	<b>57,970</b>	<b>60,662</b>	<b>4.6</b>

\*\*\*Assault totals include both simple and aggravated.

\*Sunnyvale's 2018 total was corrected after last year's annual report to reflect more accurate theft numbers

**Santa Clara County Law Enforcement Agencies**

**Crime Rate Comparison**

**Annual Report – 2019**

<b>City or Town</b>	<b>Population</b>	<b>Officers</b>	<b>Officers Per 1000</b>	<b>Crime Rate Per 100,000 Population</b>
<b>Campbell</b>	42,466	41	0.97	4,014
<b>Cupertino</b>	58,302			2,006
<b>Gilroy</b>	55,928	64	1.14	3,291
<b>Los Altos</b>	30,531	32	1.05	258
<b>Los Gatos - Monte Sereno</b>	30,988	39	1.26	1,351
<b>Milpitas</b>	76,231	88	1.15	3,624
<b>Morgan Hill</b>	45,135	40	0.89	2,002
<b>Mountain view</b>	81,992	96	1.17	3,588
<b>Palo Alto</b>	67,082	80	1.19	3,377
<b>San Jose</b>	1,043,058	1,150	1.10	3,519
<b>Santa Clara</b>	129,488	159	1.23	4,257
<b>Saratoga</b>	29,926			
<b>Sunnyvale</b>	155,567	201	1.29	2,580

The crime rate provides a measure of the severity of a crime problem within a given jurisdiction. The crime rate is based on the number of crimes reported for each 100,000 population. The rate is calculated by multiplying the number of Part I offenses by 100,000. That number is then divided by the population of the service jurisdiction

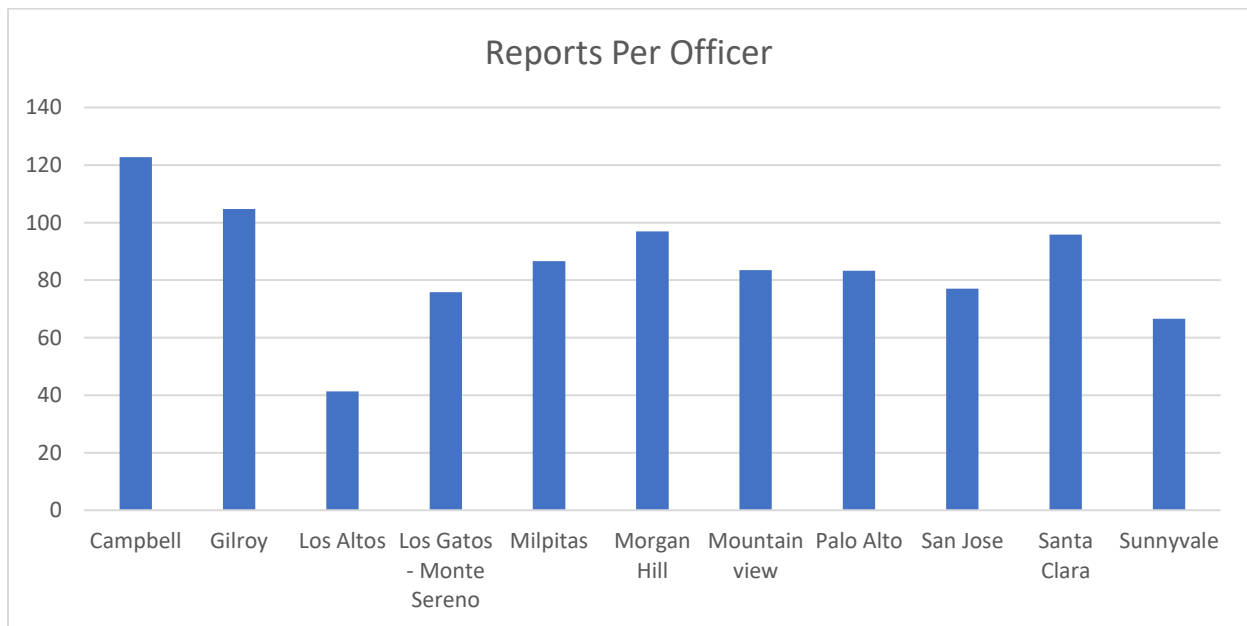
Source of Population Numbers: U.S. Census Bureau website

**Santa Clara County Law Enforcement Agencies**

**Reports Per Officer**

**Annual Report – 2019**

<b>City or Town</b>	<b>Reports per Officer</b>	<b>Reports</b>	<b>Officers</b>
<b>Campbell</b>	123	5,033	41
<b>Cupertino</b>		58,302	n/a
<b>Gilroy</b>	105	6,702	64
<b>Los Altos</b>	41	1,321	32
<b>Los Gatos - Monte Sereno</b>	76	2,955	39
<b>Milpitas</b>	87	7,623	88
<b>Morgan Hill</b>	97	3,879	40
<b>Mountain view</b>	84	8,018	96
<b>Palo Alto</b>	83	6,662	80
<b>San Jose</b>	77	88,634	1,150
<b>Santa Clara</b>	96	15,245	159
<b>Sunnyvale</b>	67	13,372	201

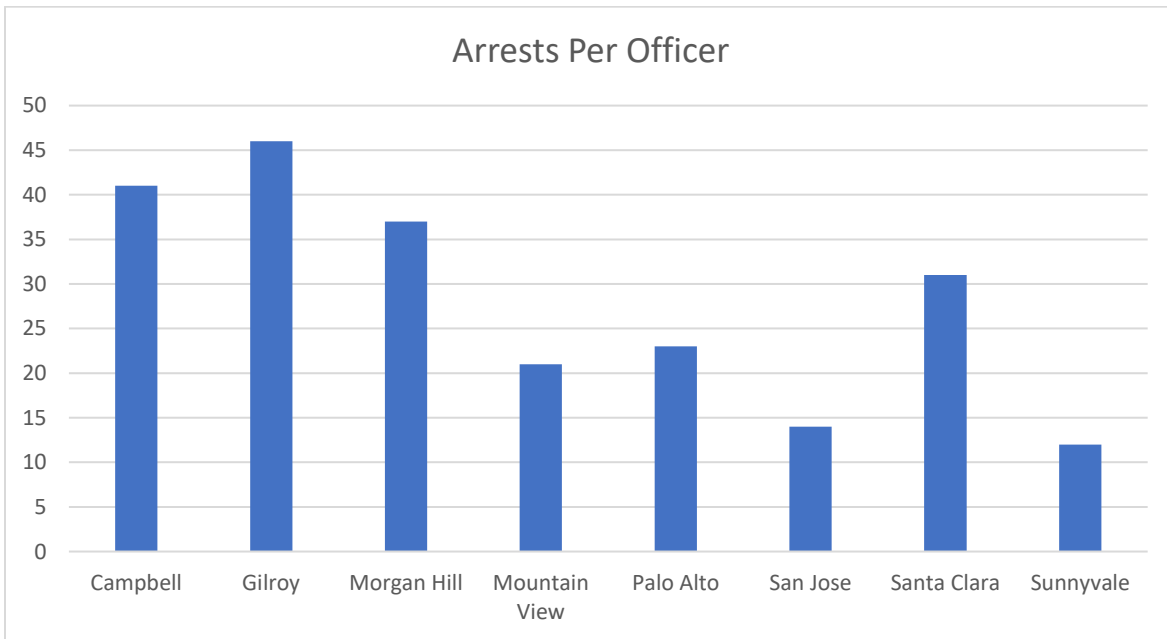


Santa Clara County Law Enforcement Agencies

Arrests Per Officer

Annual Report – 2019

City or Town	Arrests Per Officer	Arrests	Officers
Campbell	41	1,712	41
Gilroy	46	2,978	64
Morgan Hill	37	1,507	40
Mountain View	21	2,064	96
Palo Alto	23	2,185	92
San Jose	14	17,049	1,150
Santa Clara	31	3,502	110
Sunnyvale	12	2,500	201

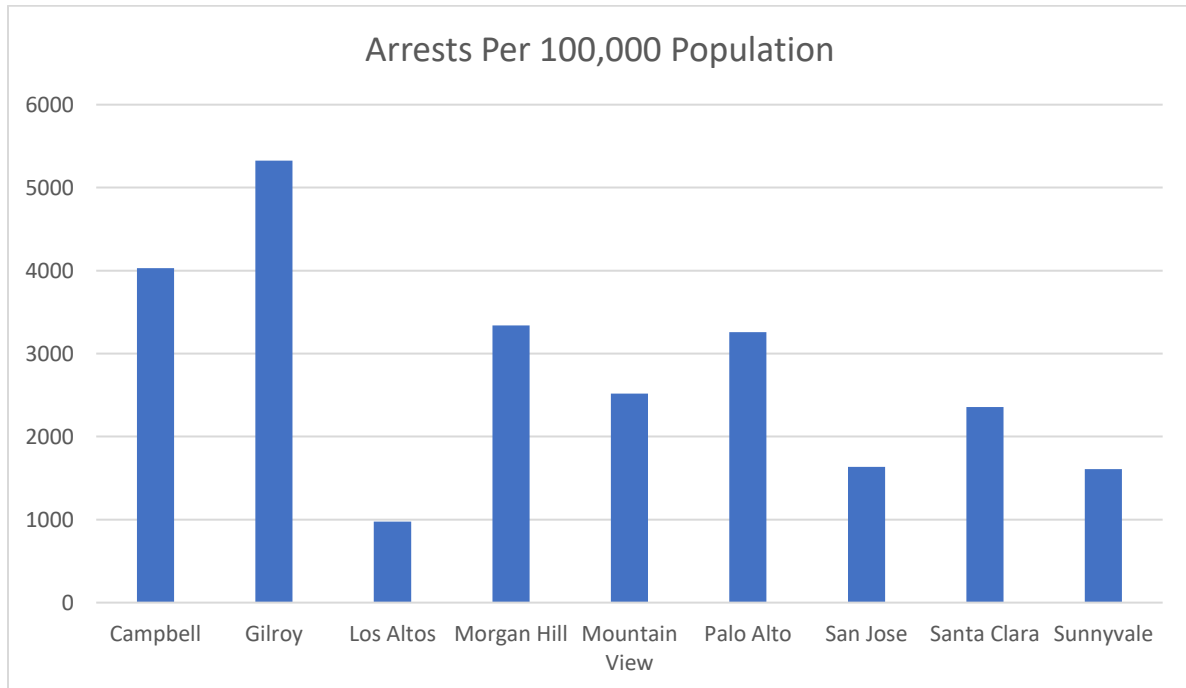


**Santa Clara County Law Enforcement Agencies**

**Arrests Per 100,000 Population**

**Annual Report – 2019**

<b>City or Town</b>	<b>Arrests Per 100,000 Population</b>	<b>Arrests</b>	<b>Population</b>
<b>Campbell</b>	4,031	1,712	42,466
<b>Gilroy</b>	5,324	2,978	55,928
<b>Los Altos</b>	976	298	30,531
<b>Morgan Hill</b>	3,338	1,507	45,135
<b>Mountain View</b>	2,517	2,064	81,992
<b>Palo Alto</b>	3,257	2,185	67,082
<b>San Jose</b>	1,634	17,049	1,043,058
<b>Santa Clara</b>	2,356	3,052	129,488
<b>Saratoga</b>			29,926
<b>Sunnyvale</b>	1,607	2,500	155,567

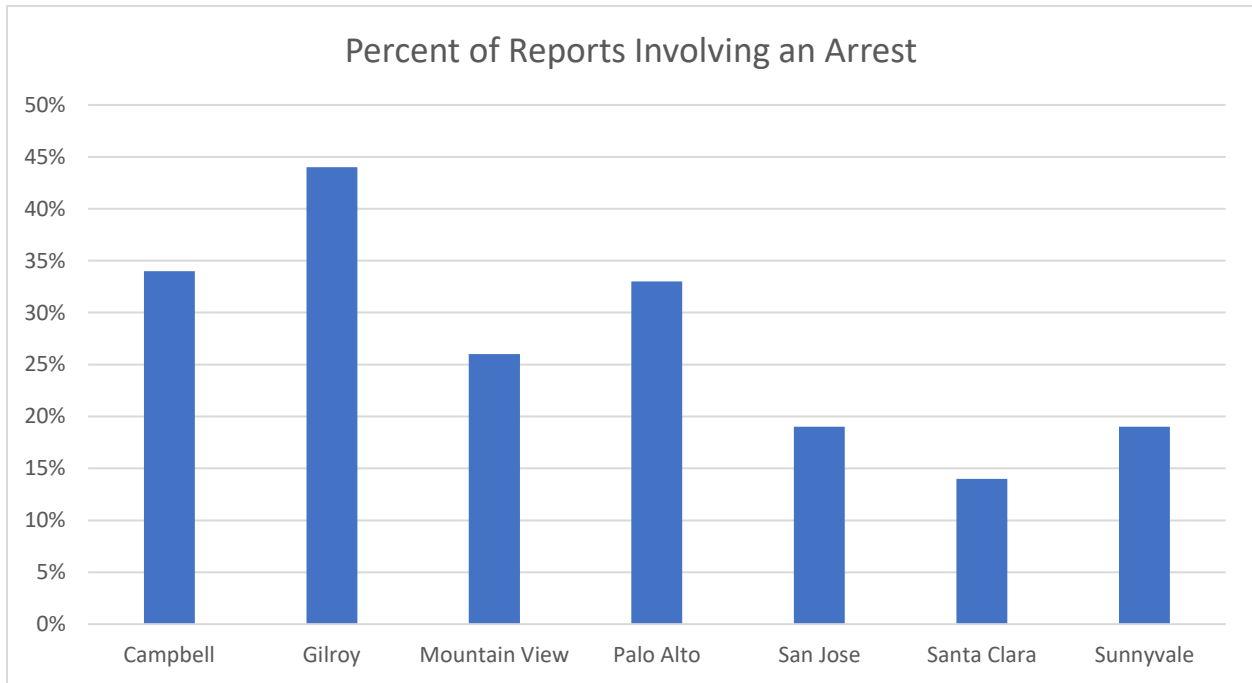


**Santa Clara County Law Enforcement Agencies**

**Percent of Reports Involving an Arrest**

**Annual Report – 2019**

City	Percent of Reports Involving an Arrest	Reports	Arrests
Campbell	34%	5,033	1,712
Gilroy	44%	6,702	2,978
Mountain View	26%	8,018	2,064
Palo Alto	33%	6,662	2,185
San Jose	19%	88,634	17,049
Santa Clara	20%	15,245	3,630
Sunnyvale	19%	13,372	2,500

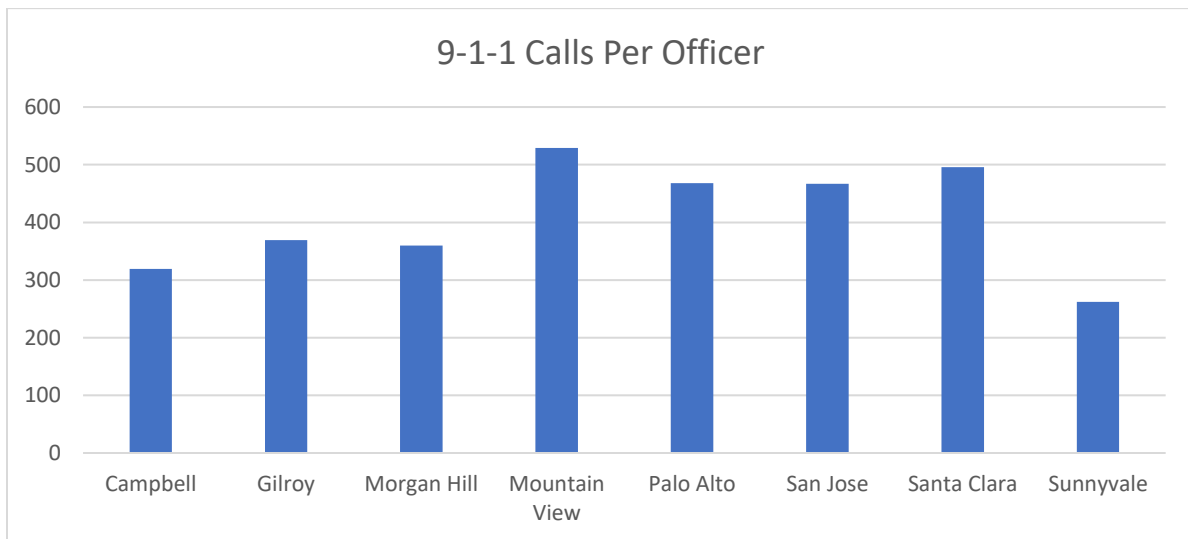


**Santa Clara County Law Enforcement Agencies**

**9-1-1 Calls Per Officer**

**Annual Report – 2019**

<b>City or town</b>	<b>9-1-1 Calls per officer</b>	<b>9-1-1 Calls</b>	<b>Officers</b>
<b>Campbell</b>	319	13,105	41
<b>Gilroy</b>	369	23,618	64
<b>Morgan Hill</b>	360	14,396	40
<b>Mountain View</b>	529	24,349	96
<b>Palo Alto</b>	468	37,452	80
<b>San Jose</b>	467	537,079	1,150
<b>Santa Clara</b>	496	54,540	110
<b>Sunnyvale</b>	262	41,611	201





**Santa Clara County Law Enforcement Agencies**

**Arrests/9-1-1 Calls/Reports/Crime Rates**

**Annual Report – 2019**

<b>City or Town</b>	<b>Arrests</b>	<b>9-1-1 Calls</b>	<b>Reports</b>	<b>Crime Rates</b>
<b>Campbell</b>	1,712	13,105	5,033	4,014
<b>Cupertino</b>				2,006
<b>Gilroy</b>	2,978	23,618	6,702	3,291
<b>Los Altos</b>	298	5,703	1,321	258
<b>Los Gatos - Monte Sereno</b>	950	10,249	2,955	1,351
<b>Milpitas</b>	1,987	23,026	7,623	3,624
<b>Morgan Hill</b>	1,507	14,396	3,879	2,002
<b>Mountain view</b>	2,064	24,349	8,018	3,588
<b>Palo Alto</b>	17,049	37,452	6,662	3,377
<b>San Jose</b>	17,049	537,079	88,634	3,519
<b>Santa Clara</b>	3,630	54,540	25,245	4,257
<b>Saratoga</b>				965
<b>Sunnyvale</b>	2,500	41,611	13,372	2,580